

REGISTERED COMPANY NUMBER: 05048319 (England and Wales)
REGISTERED CHARITY NUMBER: 1105703

Report of the Trustees and
Unaudited Financial Statements for the Year Ended 31 December 2022
for
Cancer Support UK (CSUK)

Grant Harrod Lerman Davis LLP
Chartered Accountants
1st Floor
Healthaid House
Marlborough Hill
Harrow
Middlesex
HA1 1UD

Cancer Support UK (CSUK)

Contents of the Financial Statements for the year ended 31 December 2022

	Page
Trustee's Statement	1
Chief Executive's Statement	2
Report of the Trustees	3 to 15
Independent Examiner's Report	16
Statement of Financial Activities	17
Balance Sheet	18
Cash Flow Statement	19
Notes to the Cash Flow Statement	20
Notes to the Financial Statements	21 to 28

Cancer Support UK (CSUK)
Trustees' Report
for the year ended 31 December 2022

Introduction to Annual Report

During the 12 months ending December 2022, Cancer Support UK has continued to deliver on its mission to improve the wellbeing of those who are undergoing and recovering from cancer treatment. We have provided Cancer Kits, continued with our successful Cuddles for Kids initiatives, and offered post-treatment wellbeing support through our Cancer Coach peer-group sessions. This year we have launched our Workplace Cancer Support Training services to support organisations, which are seeing increased challenges with staff impacted by cancer. This is an important extension of our services in line with our purpose, and ongoing feedback from organisations that have worked with us is encouraging in terms of the quality and value of service we are delivering and the benefits this provides to employees. We acknowledge that none of our activities would be possible without the continuing support of our donors, supporters, and volunteers.

2022 was another challenging year, dealing with the ripple effects of the pandemic, which continued to impact on the charitable sector, in particular on fundraising activities. Additionally, Cancer Support UK's fundraising from the sale of used clothes was severely disrupted by the war in Ukraine, which is a significant sales market for our partner, Clothes Aid. As the economic challenges deepened and NHS capabilities were stretched, Cancer Support UK again took the decision to use a proportion of its reserves to deliver its services to those individuals dealing with cancer. The Board believes it is important to offer a dependable level of support to those who use our services, while ensuring the Charity's longer term financial stability by maintaining adequate retained reserves.

It was also a year of change for Cancer Support UK, with a new CEO, Mark Guymmer, taking over the running of the charity in May, a new office location, at a much reduced rent, and a broadening of Cancer Support UK's sources of funds, notably the introduction of the Workplace Cancer Support Training initiative. The Workplace Training services were developed in response to many organisations identifying increased challenges in supporting staff impacted by cancer. Feedback from early adopters of our services was very encouraging, notably the benefits to organisations' employees, providing them with the knowledge and confidence to engage, listen and support someone who has been impacted by cancer.

During the second half of the year, Mark and the Cancer Support UK team focussed on building more effective communications with colleagues, donors, supporters and volunteers, as well as growing revenues to ensure that the year ahead did not, again, rely on reserves to fund our services. The Cancer Support UK team also began building connections with a range of partners, including Cancer 52, an alliance of over 90 cancer charities, with the aim of sharing experience with, and learning from other cancer-connected organisations.

In closing, we'd like to acknowledge the courage of those who deal with the life changing event of a cancer diagnosis, the subsequent treatment and the often unrecognised challenges of recovery. By any measure, this is an extremely difficult moment in a person's life and the feedback below, from Samantha who attended one of our Cancer Coach peer support groups, makes the work of our staff and the Board at Cancer Support UK immensely fulfilling.

"Our facilitator on the course was fantastic, carefully supporting our conversations and providing practical tools to help us move forward. Being able to talk with other people who had had similar experiences to me was invaluable. In addition, the strategies and techniques for dealing with negative feelings really helped me process everything I had gone through. I absolutely loved the group and got a lot out of it."

Board of Trustees
Cancer Support UK (CSUK)

Cancer Support UK (CSUK)
Chief Executive's Statement
for the year ended 31 December 2022

We set out in 2022 with the hope that many of the difficulties faced by the pandemic were behind us and that we would have a period of stability to further develop the valuable services our charity provides to support those impacted by cancer.

However, the ongoing impact created by the pandemic, as well as economic uncertainty and events around the world, has continued to create an increasingly challenging operating environment for everybody. In response, we have had to step up our efforts to help as many people as we can, particularly during the 'cost of living' crisis, which has created additional difficulties.

Because of the ongoing problems individuals were facing, we made a conscious decision to continue to use our reserves throughout 2022 to maximise the services we could deliver. However, at the same time, in acknowledgment of the need to operate on a break-even financial model, we worked hard to ensure we had a robust financial and operational strategy in place for 2023.

This clear plan will enable us to build a strong foundation for the charity, so we can continue to address the significant needs of those we are committed to supporting. We have used 2022 to lay the groundwork for an ambitious three-year plan that will not only see us scale our valued services, but build additional support, aligned to our purpose, while generating new income to support this growth.

Over the next three years, our aim is to scale up the number of individuals who can benefit from our Cancer Coach service, addressing the emotional challenges, which many face after their physical treatment is completed, ensuring they are supported to continue with their recovery from a cancer diagnosis.

Additionally, we will scale up the number of Cancer Kits, which we provide to children, with an ambition to ensure that every child diagnosed each year will receive a free Kid's Cancer Kit. We estimate that this will be approximately 2,000 kits a year, providing items that provide enjoyment and distraction. Most importantly, our kit shows these children and their families that we are thinking of them and supporting them at this most difficult time.

Finally, following a successful launch in 2022, we will scale up our workplace training. It is estimated that there may soon be as many as one million individuals of working age diagnosed with cancer and there are many reasons to ensure that organisations are better equipped to support them. At a time when so many people are facing increased financial pressure, a cancer diagnosis brings unwanted additional costs such as travel to hospital appointments, increased heating bills to keep warm, higher food bills to accommodate changes in diet, or the purchase of additional items such as prescriptions and toiletries.

I would like to finish by thanking every single person who has supported our charity over the year. This includes individual donations, fundraising activities, gifts in wills, grants from trusts, organisations who are adopting our innovative training, everyone who promotes our services to ensure more people get help, and the staff and Trustees of the charity who have overseen and delivered everything we have accomplished over the past 12 months. Despite all the challenges we face, we have finished the year knowing we helped support as many people as possible, innovating to expand our impact and with a clear view of what we need to do over the next three years.

Mark Guymer
Chief Executive, Cancer Support UK (CSUK)

Cancer Support UK (CSUK)
Report of the Trustees
for the year ended 31 December 2022

The trustees who are also directors of the charity for the purposes of the Companies Act 2006, present their report with the financial statements of the charity for the year ended 31 December 2022. The trustees have adopted the provisions of Accounting and Reporting by Charities: Statement of Recommended Practice applicable to charities preparing their accounts in accordance with the Financial Reporting Standard applicable in the UK and Republic of Ireland (FRS 102) (effective 1 January 2019).

OBJECTIVES AND ACTIVITIES

Objectives and aims

Cancer Support UK provides practical and emotional support to people living with cancer, both during and after the treatment period. We support people with all kinds of cancer across the UK

Public benefit

The trustees have referred to and discussed the implications of the provisions of Section 17 of the Charities Act 2011, which state that all charities must demonstrate that they are established for public benefit and have had due regard to the public benefit guidance issued by the Charity Commission.

Programmes and services

Cancer Kits

We offer free Cancer Kits to adults and children currently undergoing treatment, as a practical aid to recovery:

Chemo Kits



Our Chemo Kits are designed specifically to help people undergoing chemotherapy. They contain items to offset some of the unpleasant side effects of treatment, like cold hands and feet, nausea, and sensitive teeth.

Cancer Kits



Our general Cancer Kits are designed to help adults who are not receiving chemotherapy, but who are undergoing another form of cancer treatment. They contain items like puzzle books to relieve boredom, a relaxing pillow spray to aid sleep and toiletries to use on the go.

Kids' Kits



Our Kids' Kits are designed to brighten the days of children living with cancer and undergoing treatment. They contain small toys and colouring sets to help entertain and pass the time in hospital, and practical items like cosy socks and antibacterial wipes.

Comfort Kits



This Kit contains items that provide warmth and comfort, such as a microwavable hot water bottle, heat pads to ease aches that may come as a result of treatment, and a travel pillow to make spells in hospital that bit easier.

Cancer Support UK (CSUK)
Report of the Trustees
for the year ended 31 December 2022

Cuddles for Christmas and Bags of Smiles

In the run up to Christmas, the annual Cuddles for Christmas appeal and our trial Bag of Smiles campaign allowed us to send Christmas gifts free of charge to children and young adults in hospital wards and attending units as day visitors. The Bags of Smiles contained colouring books and pencils, fun activities and a Santa hat as well as paper chains. We sent 910 warmable teddies and 497 bags of Smiles to 29 hospitals across the UK, including Belfast, Edinburgh, London, Cardiff, Bristol and Plymouth with the intention of bringing a smile to the faces of sick children.

Easter cuddles

Following on from the success of our 2021 Easter Cuddles appeal, which is similar in concept to the Cuddles campaign, in 2022 we ran our second Easter Cuddles appeal, which raised funds to deliver 600 warmable Easter teds in time for Easter to kids in hospital beds, complete with a personal message (same as for Cuddles) from the donor who funded the delivery of the ted.

Cancer Coach

Our Cancer Coach programme is a six-week structured self-management course - delivered by phone and online video - for people, diagnosed with stage 1-3 cancer, who have completed their treatment. Developed with the Mental Health Foundation, the programme offers emotional and peer support, which is fundamental to recovery.

Cancer Coach helps people who have finished their cancer treatment to:

- o Better understand and manage their own challenging emotions
- o Build resilience
- o Begin to reduce feelings of isolation and low mood
- o Improve their confidence and self-esteem, both during the programme and beyond

It gives participants an opportunity to share their experiences, to understand some of the reasons why they are feeling low or anxious and to explore some simple tools and strategies to reduce some of the impact of negative emotional feelings.

Workplace Cancer Support Training



Our vision is to ensure that every person impacted by cancer feels emotionally supported in the workplace. The income derived from our paid-for Workplace Cancer Support courses, developed in response to the needs of organisations, will help fund our Cancer Coach programme and enable us to send out more Cancer Kits.

2022 saw the launch of the Workplace Cancer Support Ambassador, an extracurricular role within an organisation, which provides emotional support to those affected by cancer in the workplace. We worked closely with our partner, Mondelēz to develop and roll out the training - Mondelēz themselves have trained over 100 Workplace Cancer Support Ambassadors.

Other large organisations such as Takeda, The AA and South Central and West NHS Foundation Trust have also adopted the programme.

Cancer Support UK (CSUK)

Report of the Trustees for the year ended 31 December 2022

Programme and services achievements

Cancer Kits

In 2022 Cancer Support UK distributed Cancer Kits, Chemo Kits and Comfort Kits to 4,213 adults and children receiving cancer treatment across the UK.

Breakdown of kits:

- o Cancer Kits 1,097
- o Chemo Kits 2,405
- o Comfort Kits 521
- o Kids Kits 190

Overall feedback for the kits scored 4.84 out of 5.

This is just a small selection of feedback we received from adults across the UK who received one of our Cancer Kits, Kid's Kits, Comfort Kits and Chemo Kits:

- o I was surprised by the items in the kit, they were so good quality. Just love it.
- o This kit made my day and is very useful, you can tell items have been chosen with thought and care and are very appropriate for those like myself receiving chemotherapy. Thank you very much.
- o I have a four-year-old who was diagnosed with Wilms tumour. She loved receiving this gift, and enjoys using the items at home and at hospital. She uses the bag for everything and the socks went down a treat. This is such a great idea, thank you.
- o I ordered a kit for my grandad who is facing his second battle with lung cancer, unfortunately it's incurable this time round. This kit is amazing, it's so thoughtful and kind, my grandad couldn't believe I got all this for nothing and is so very grateful, as am I. Cancer is incredibly brutal on the body and mind and it's the kindness and thoughtfulness shown in these brilliant kits that can bring comfort on those dark days. Thank you very much and what an amazing job you do.
- o So lovely to get this in the post. It really cheered me up at a difficult time. I am so grateful. It really helped me and perked me up to receive such a lovely caring kit, when you are diagnosed with cancer it is such a big shock, you need anything to encourage you to have the treatment.

The people who inspire us to carry out our work

Cuddles for Christmas appeal

Lived experience story: Tiernan



On Christmas Eve 2021, three-year-old Tiernan's parents received confirmation that their little boy had Wilms' tumour, a cancer of the kidneys that typically occurs in children. Although Tiernan was allowed home for Christmas Day to make sure Santa had visited, he had to return to hospital for the remainder of the festive period for radiotherapy and chemotherapy. Only his mum or dad were allowed to stay, so this little boy, who should have been enjoying the Christmas holiday at home with his brothers and sister, had to make do with video calls to family and friends. It was around this time, when Tiernan felt cut off and frightened on a hospital ward, that he received a warmable teddy bear from Cancer Support UK, funded by a donor just like you. At the lowest point in his life, it restored his smile and gave him huge comfort. The teddy has been such a hit, Tiernan takes it to bed with him every night.

Report of the Trustees for the year ended 31 December 2022

A young girl with dark hair is lying down, smiling at the camera. She is wearing a white shirt with a colorful pattern. She is holding a white object, possibly a stuffed animal, in her hands. The background is a plain, light-colored surface.

A collection of various health and wellness products arranged on a white surface. The items include a large blue U-shaped pillow, a yellow box with a magnifying glass graphic and the word "FLEXIBLE", a green box labeled "CANCER SUPPORT", a green box labeled "STOMACH'S", a white box labeled "ARTHRITIS", a small bottle of "GELATIN", a notebook with a pen, and several other smaller boxes and containers. The background is a plain, light-colored wall.

Cancer Support UK (CSUK)
Report of the Trustees
for the year ended 31 December 2022

Cancer Kits

Lived experience story: Jos, Chemo Kit recipient



Songwriter Jos was diagnosed with stage 2b breast cancer at the age of 41, during the first Covid-19 lockdown. "I knew about Cancer Support UK's Cancer Kits through my previous role as a children's cancer nurse. I ordered a Chemo Kit and was so thankful for it - every item was brilliant and thoughtful. I was especially grateful for the toasty warm socks, which really helped keep me warm when I used the Cold Cap, and the toothpaste, which protected my sensitive teeth during chemo. Thank you to everyone who donates to make these Kits available and to Cancer Support UK for providing such a valuable service."

Lived experience story: Jo - Chemo Kit recipient



Life changed dramatically when Jo received a diagnosis of stage 3 breast cancer in 2022.

"I was 43 with no family history of breast cancer. I knew people who had gone through cancer and I had seen the TV ads. But nothing can prepare you for those words: 'you have cancer'. I just wasn't ready for that conversation. "I remember my first oncology appointment, when my cancer nurse advised me that my whole life was about to change. She said that I would eat, drink and sleep cancer. She wasn't wrong.

"The appointments started rolling in, a chemo plan was made. I became submersed in an alien world, surrounded by urgency and sympathetic looks. All of this while still trying to digest the news.

"A friend made me aware of organisations who supported cancer patients with care packages. After some investigation I found Cancer Support UK and requested a Chemo Kit.

"When the kit arrived, I discovered it included lots of really handy things that help you through the journey of chemo. I have used nearly all of the items and the Sherbet Lemon sweets have been a wonderful help with nausea and dizziness.

"Most importantly, the kit provided me with the knowledge that I wasn't alone. It told me that people were there for me during this awful time and gave me joy and excitement."

Cancer Support UK (CSUK)
Report of the Trustees
for the year ended 31 December 2022

Finnie's story - Kid's Kit



In March 2020, four days before the first national COVID lockdown was announced, Finley (Finnie for short), was diagnosed with Acute Lymphoblastic Leukaemia. He was admitted to Addenbrooke's children's oncology ward for three years of intense and gruelling treatment, beginning with Chemotherapy.

Finnie's mum Kellie recalls: "Finnie's diagnosis was the news that no family should ever have to face. It was particularly hard coping with it during a pandemic and in lockdown. Extended periods of isolation, separation from family and friends and the constant COVID cloud placed enormous strain on us as a family of four.

"Childhood cancer changes a family forever, but the support of charities like Cancer Support UK have helped to brighten Finnie's hospital stays.

"Finnie loves painting, drawing and puzzles. So the Kid's Kit you sent him was fantastic, as it contained lots of practical things to keep him busy and take his mind off treatment. The puzzle book is filled with lots of popular children's games - a great way to keep the brain stimulated, while having fun. As Finnie is an avid reader, the animal bookmark, with its little furry friend on the top, has been particularly useful. However, his favourite item is the pair of cosy Minion socks, which has helped to keep his toes warm and snug. We keep them in his hospital bag ready for admission."

What the hospitals and hospices said about our Cuddles and Bag of Smiles gifts

o To the Cancer Support UK team. Thank you for your kindness and generosity to the children of Ocean Unit. These gifts make an enormous difference to our children's visit. Wishing you a very happy new year. **Sister Sue and The Ocean Team. Bristol Royal Hospital for Children**

o A massive thank you for all the Warmies and Christmas activity bags. The bears are super cute this year and the bags are a brilliant idea - the older children love them. Best wishes for the New Year. **Jo. Oncology Play Specialist. Bristol Royal Hospital for Children**

o We're happy to say we have received all your boxes - thank you very much. Our Oncology nurses have taken a lot of the gifts out on their visits and the activity bags will be given out at our next clinic on Wednesday. The gifts are ideal, and I understand they have brought lots of smiles. Please thank everyone involved in fundraising and sorting. Hope you all have a Happy and Healthy Christmas and New Year. **University Hospital Plymouth**

o Thank you so much for your amazing donation of Cancer Kits for our young people at Christmas! The biggest thank you from us – we gave these out on Christmas week to patients on our unit and any siblings that came in to visit. They were hugely appreciated and they had the best time playing games and wearing their Santa hats. Thank you so much for your support – you are amazing! **Teenage Cancer Trust, Cardiff**

o Dear Cancer Support UK. The children from Schiehallion Ward and Day Care would like to thank you very much for your kind gifts and donations. They make a big difference to their stay in hospital throughout the festive season. Your kindness helps us to provide joy and activities during a hospital stay and builds happy memories for the children and their close family and friends. Many thanks again for thinking of us. The boys, the girls and all the team in Schiehallion. **Royal Hospital for Children Glasgow**

o Thank you so much for the bears and the Christmas gift packs. Our oncology children have really appreciated these during the Christmas period and we still have few left to use during the year. Happy New Year. **Queen Elizabeth The Queen Mother Hospital, Kent**

o Thank you so much for organising the teddies to be dropped off for our patients and families. This is very good of you and your charity. **The Royal Marsden NHS Foundation Trust**

Cancer Support UK (CSUK)
Report of the Trustees
for the year ended 31 December 2022

Cancer Coach

In 2022 we continued to deliver Cancer Coach for post-treatment individuals, providing the community, structure and support that our participants are seeking when initially reaching out to us. Cancer Coach was delivered to 366 participants in five group cycles throughout the year.

We have continued to make our groups widely available and accessible. Offering our services remotely means that in 2022 we supported participants from over 60 counties across the UK. We have continued to see a strong uptake of our groups from those with a previous breast cancer diagnosis (one of the four most common cancers), but in addition to this, we have supported participants with over 20 different cancer types. The age range of our participants has extended from those in the 18-25 age bracket to 70+.

The diversity in our applications is indicative of a growing awareness of our services and we have been encouraged to see this reflected in the range of applications. Cancer Coach continues to primarily be accessed by self-referral and in 2022 we saw an increase in the variety of methods by which people had heard about the service. This includes social prescribing services, GP's and nurses and other peer support groups.

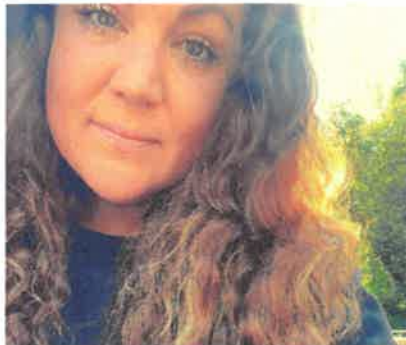
A number of our Cancer Coach facilitators passed the first and second year mark of volunteering with us, showing their continued engagement and commitment to supporting those who access our services. The skill, experience and passion each facilitator brings to every group they deliver is reflected in the engagement of their participants. We continue to be inspired by and proud of our fantastic team of coaches.

In 2022 we recruited a new Participant and Administration Coordinator, Megan Tarr. The experience that Megan brings to the role has allowed us to maintain our high standards of participant support, as well as offering an improved and more personalised booking experience.

Feedback received from participants throughout 2022 continues to demonstrate the life changing benefits of participation in Cancer Coach, with a reduction in isolation being one of the strongest themes.

Our Cancer Coach participants

Jo



Jo was diagnosed with breast cancer in 2020 and found the whole journey very lonely. Following surgery and chemo, cancer consumed her thoughts.

"I saw an advert on social media for Cancer Support UK. Reading someone else's words, which sounded like my own thoughts was surprising and reassuring. I knew I needed to do it and I contacted CSUK straight away.

"The group I was part of were women of similar ages and by the end of the first session, I felt the loneliness lift. They had the same fears, they struggled with the same feelings, they had the same anger and we talked this through honestly and openly. The relief to hear others had the same thoughts was therapeutic and I looked forward to every session after that.

"We discussed returning to work, which helped my guilt in not doing it sooner and laughed about our Tamoxifen rages. Being able to talk to others who really understood was life changing and I am so very grateful to Cancer Support UK for bringing us together."

Cancer Support UK (CSUK)
Report of the Trustees
for the year ended 31 December 2022

Frank



Frank, 72, was diagnosed with bowel cancer in 2021 and joined Cancer Coach in February 2022. "The course was extremely beneficial. The course facilitator explained a variety of useful strategies, which I could adopt in a practical way to help me move forwards. The group I joined was for men only. It was helpful to discover that my post cancer worries were experienced by other men. None of us were alone in our fears. So today, although I have two very close family members who are still dealing with cancer every day, I feel I am lucky and I hope to remain cancer free into the future."

Sabine



In September 2019 Sabine was diagnosed with stage 2 breast cancer. "I found Cancer Coach convenient and easy to attend. The facilitator was an absolute delight and, for the first time in a long while, I felt better. The struggle wasn't over, but now I wasn't alone. There were people who felt exactly the way I did, and it was great to know that it was alright to feel the way I did. Each session gave me strength and reason to carry on. The fact that we could discuss sensitive issues with each other, without being judged, felt empowering. The whole atmosphere was relaxed, empathetic and helpful, as we all supported and learned from each other. We were able to discuss coping techniques and gave ourselves the freedom to take the time we needed to heal and reconfigure our lives. We wanted to make amends for own benefit, as well as our loved ones, but without putting ourselves under pressure. We learnt to let go of the grief we felt at losing our former selves. Now we were ready and willing to represent the new person that we had become through this struggle. When treatment finished it was like falling through a hole. But Cancer Coach gave me the support I needed when no one else could. Thank you, Cancer Coach, for your dedication and support."

Our Cancer Coach volunteers

Sumitra's story

Seven years ago Sumitra was diagnosed with triple-negative breast cancer. She is now a volunteer with Cancer Support UK's Cancer Coach programme and uses her experience to help people who have completed their physical cancer treatment. Cancer Coach support groups can help participants to challenge any negative thought patterns that can linger after treatment ends, as well as how to manage their worries.

"After having cancer, you are seen as a strong person. However, I still don't feel I was a strong person. I didn't choose to have cancer. But I did choose not to let the experience of cancer define who I am now. What I learned from having cancer is to live each day as it comes. Everyone's journey is unique and there is no normality - simply the new normal from having cancer."

Cancer Support UK (CSUK)
Report of the Trustees
for the year ended 31 December 2022

Our impact

We are delighted to share with you the results of our evaluation and feedback from Cancer Coach participants in 2022.

Feedback

About the group

- o The most useful thing about the group is learning that you are not alone, others are feeling or have felt the way I felt and it was knowing that it was ok to think and feel how I did and my thoughts and feelings were normal. I felt safe to be able to open up and be honest about how I was feeling.
- o It was so good, every Monday I looked forward to talk with my group. I would do something similar again.
- o I thought the openness of the group was amazing and there was no least useful parts...I learnt so much.

About the Cancer Coach facilitator

- o Jane has been fantastic, encouraging, positive, really taking her time to give each person space to discuss their emotions and offering sound advice to progress forwards/try new techniques with useful quotes too.
- o Helen was brilliant. A kind and caring person. Very gentle and sensitive in her approach to a very sensitive subject.
- o Dorothy was absolutely lovely throughout and supported the group from start to finish. She was brilliant.

About the course content

- o I feel I have been given not just some really useful tools to help unpick how I feel and to deal with those feelings, but also I feel the content helped me give myself permission to feel the way I felt, and to acknowledge that my feelings were perfectly normal. In giving myself permission I have allowed myself to grieve for the things I felt I had lost, and to start building a new normal. I've also found a way to allow myself to be joyful again, where I had lost the joy.
- o I feel I am now better equipped to deal with difficult emotions and have learned, with the tools provided, to manage previous, unrealistic personal expectations also to be kinder to myself and give myself time to heal emotionally.
- o During this six week course, I have learnt to accept that things may never be the same again, but thanks to the course, I can now implement strategies to help me achieve calm in my life, be kinder with myself, and step by step tackle and achieve personal goals.

Evaluation from 2022:

- o 98% of participants said they felt their overall mood had improved after joining a Cancer Coach group
- o 95% of participants said they felt better equipped to manage their emotions after joining a Cancer Coach group
- o 100% of participants said they would recommend Cancer Coach to others
- o 61% of Cancer Coach participants said they would be interested in a support session that specifically addresses the challenges of returning to work.

Cancer Support UK (CSUK)
Report of the Trustees
for the year ended 31 December 2022

Workplace Cancer Support Training



Total number of people trained by our expert cancer support coaches - 713

o Number of employees in the organisations where we have provided training - 67,300

o Workplace Cancer Support Ambassador training - 121 (South Central West NHS Trust, Bilstein Group, Arconic, J.W. Filshill, Pentland, Unipart Group, Pizza Express, Mondelēz, Teleperformance)

o Lunch 'n' Learn sessions - 90 (Iceland, Takeda, North Star Housing Group, Regenda Group)

o eLearning modules - 500 (Regenda Group)

Feedback from Workplace Cancer Support training participants

o "It felt like a very safe space to discuss the topic, and I feel better equipped to support someone facing cancer, whether they are a friend or family member."

o "A very helpful guide to awareness and training."

o "The training was really thought provoking and delivered extremely well. Thank you for making this training available."

o "I thoroughly enjoyed the training. Being a Cancer Ambassador will enable me to support/advise colleagues, family and friends."

o "The training was brilliant. I feel very happy to become a Cancer Ambassador and will do my very best to help support friends, colleagues and their families."

o "Great training today and a fabulous interactive team. Great to become a Cancer Ambassador and to be able to support and help colleagues, friends and family."

o "Very pleased to be part of this scheme. Hopefully we can help make a difficult situation a little easier to navigate."

Cancer Support UK (CSUK)

Report of the Trustees for the year ended 31 December 2022

Fundraising activities

CSUK relies primarily on donations from the public for its income. The trustees are extremely grateful to all CSUK donors, no matter how much is given, without whose dedication and support the charity would not be able to undertake its vital work.

Direct mail appeals

Thanks to our donors we raised £90,646 from our direct mail programme during 2022. Many of our direct mail donors have supported our charity for many years, so we are truly grateful for their support.

Digital appeals

We continue to focus on recruiting and engaging donors via our digital platform and we continue to invest in digital marketing whilst ensuring we manage costs to make this as efficient and effective as possible. Our digital programme raised £57,704 in 2022 as we continue to manage the complexities of an ever changing and fast-moving digital environment.

Our Cuddles and Fill a Kit appeals continue to work well to ask existing donors to support our work, as well as recruit new supporters. During Christmas 2022 we also introduced a new campaign strand to fund 500 Bags of Smiles. Donors were able to donate to fill bags of goodies to send out to children and teens in hospital with cancer over Christmas.

Legacies and In Memory giving

We are always grateful for every gift we receive - as a small charity which doesn't receive any government funding, our donors are vital to keeping the charity running so that we can provide services to people during their cancer journey. In particular, gifts left to us in a Will or In Memory of a loved one are a poignant source of funds. In 2022 we received £142,629 - with many gifts being from long established donors or people who have accessed our services. These gifts help us to plan services for the future, and even launch new services to support people with cancer, so are incredibly important to us.

Regular Giving and Gift Aid

Our regular giving donors help provide predictable income to the charity. Our donors are proving loyal, and income only grew marginally to £5,555 over the course of 2022. We hope, with additional resources, we can grow this important donor group in future years."

Many of our supporters also confirmed we were able to claim Gift Aid on their donation. Across all of our activities this helped us to raise an additional £28,042 of funding. However you chose to support us during 2022, thank you.

Clothing collections

During 2022 CSUK worked with its Commercial Partner Clothes Aid to generate £42,070 income for the charity.

Trust Fundraising

CSUK is extremely grateful to the support it received from trusts and foundations throughout the year. In 2022 we received £146,814 of funding through trusts and foundations

We would like to thank the following trusts for supporting our work:

- o Northumberland and Tyne and Wear Community Foundation
- o The Tory Family Foundation
- o The Childwick Trust
- o The Chrimes Family Charitable Trust
- o The Lord Belstead Charitable Settlement
- o The Geoff & Fiona Squire Foundation
- o Fowler Smith and Jones Trust
- o The Lawson Trust CIO
- o Souter Charitable Trust

Cancer Support UK (CSUK)
Report of the Trustees
for the year ended 31 December 2022

- o Heart of Bucks
- o The Pamela Barlow Charitable Trust
- o The Paul Cottingham Trust
- o The 29th May 1961 Charity
- o The Edward And Dorothy Cadbury Trust
- o The Lady Forester Trust
- o Kent Community Foundation - Pole Brook Fund
- o Arnold Clark Community Fund
- o The Oakdale Trust
- o The Norman Family Charitable Trust
- o The Mrs Yvonne Flux Charitable Trust
- o The Weinstock Fund
- o The Stanley Grundy Foundation
- o B-C H 1971 Charitable Trust
- o Lillie Johnson Charitable Trust
- o Pilkington Charities Fund
- o The Wixamtree Trust
- o The Pink Ribbon Foundation
- o The Frank Litchfield General Charitable Trust
- o Dora Rebecca Fine Charitable Trust
- o The J Reginald Corah Foundation Fund
- o The Purey Cust Trust CIO
- o Birmingham Hospital Saturday Fund
- o The Florence Nightingale Aid In Sickness Trust
- o The JFR Charitable Trust
- o Cumbria Community Foundation
- o Kilpatrick Fraser Charitable Trust
- o The Felicity Wilde Charitable Trust
- o The Maud Elkington Charitable Trust
- o Cranfield Trust
- o The Walter Guinness Charitable Trust
- o Ganzoni Charitable Trust
- o The Squire Patton Boggs Charitable Trust
- o Doris Field Charitable Trust
- o Hospital Saturday Fund
- o The Aubrey Orchard-Lisle Charitable Trust
- o Awards For All England
- o Louis Nicholas Residuary Charitable Trust
- o The Michael Marsh Charitable Trust
- o The Shanly Foundation
- o Louis Baylis (Maidenhead Advertiser) Charitable Trust
- o The Chrimes Family Charitable Trust
- o The Provincial Grand Charity of Northamptonshire and Huntingdonshire
- o The Rothley Trust
- o The Sylvia and Colin Shepherd Charitable Trust
- o The Brian Shaw Memorial Trust
- o Awards For All Scotland

Cancer Support UK (CSUK)
Report of the Trustees
for the year ended 31 December 2022

Financial review

Financial position

The Board noted the use of reserves for CSUK's services to grow and deliver continued impact in a challenging macro environment, which resulted in a net deficit of £212,788 compared to a net deficit of £262,497 in 2021.

Fundraising results

Fundraising income decreased by 3% from £567,544 to £549,263.

Expenditures

CSUK's total expenditures decreased from £830,041 to £763,822. Expenditure on charitable activities increased from £574,132 to £594,169, while costs relating to fundraising decreased from £255,909 to £169,653. These financial outcomes enabled CSUK to invest in the delivery of charitable services while reducing the deficit from the previous year.

Fundraising approach

The charity takes the following approach to fundraising. The approach is continually monitored by the Board with the CEO taking responsibility for execution. The charity uses its own full-time staff for grant applications. An experienced fundraising contractor is used for individual giving. The charity partners with Clothes Aid Ltd for clothes collection services where they report monthly on any customer complaints. At every Board meeting, any complaints relating to fundraising are disclosed to ensure good practice is maintained.

Fundraising complaints

No complaints were received in 2022.

Investment policy and objectives

CSUK has no material investments or endowments currently. Uncommitted funds are held in interest-bearing deposit accounts to maximise earnings.

Reserves policy

The Board has agreed to set aside and ring fence 'free reserves' i.e., unrestricted funds, not committed or invested in tangible fixed assets, which equates to three months of the current year budgeted operational overheads. This will be held in a separate bank/instant access savings account (potentially interest earning) and would not be accessed without the specific prior agreement of the Board of Trustees.

In addition, unrestricted cash in CSUK's transactional bank account is controlled at a level that equates to a minimum of three months and a maximum of six months cover of the current year budgeted operational overheads. This policy is reviewed on an annual basis when conducting the annual audit and agreeing the year-end financial statements.

At the end of December 2022, the charity had total reserves of £181,857, of which £76,204 were unrestricted. This is in line with the reserves policy as it represents three months of the current year budgeted operational overheads.

Going concern

2022 proved to be another very challenging year where the reserves held by the charity have been used to continue to deliver the much-needed services as well as providing time to establish a clear and robust strategy for the future. Our planning process, including financial projections, has taken into consideration the current economic climate and its potential impact on the various sources of income and planned expenditure. We have a reasonable expectation that we have adequate resources to continue in operational existence for the foreseeable future and the accounts have, therefore, been prepared on the basis that Cancer Support UK is a going concern.

Cancer Support UK (CSUK)
Report of the Trustees
for the year ended 31 December 2022

Financial review

Senior executive remuneration

In line with the recommendations of the NCVO Inquiry into Executive Remuneration published in April 2014, the Charity has decided to disclose the remuneration of the Chief Executive. CSUK's CEO is responsible for setting the remuneration for all staff depending on their experience and performance and the market benchmark for their role. The only senior manager role in the organisation is the CEO and their remuneration package is determined by the Board of Trustees. They will determine and adjust salary and any other compensation or benefits, benchmarked against similar roles in the Third sector and broader employment market, and reflecting the CEO's performance and contribution. CEO remuneration in 2022 has been set at £80 000 per annum. There are no other pecuniary benefits for senior or other staff at the Charity.

STRUCTURE, GOVERNANCE AND MANAGEMENT

Governing document

Cancer Support UK (CSUK) is a registered charitable company limited by guarantee (Company No 5048319, England and Wales Registered Charity No 1105703, and Scotland Registered Charity No SC039731). It is governed by a constitution in the form of a Memorandum and Articles of Association dated 18 February 2004. The liability of each member in the event of the winding up is limited to £1. The members of the Board of Trustees that served during the year, hereafter referred to as 'the Board' or 'the Trustees' are set out below:

M R Doyle, Chair

Ms J E Dawson

Ms L M Delaney (appointed 4.2.2022)

Mr B Marcus (resigned 24.2.2022) (reappointed 1.08.2022)

Ms S E McDonald (resigned 14.3.2022)

Ms S Yaganti

Recruitment and appointment of new trustees

Trustees are appointed by the Board. There must always be at least three trustees, and any vacancies arising are filled by the selection and appointment of suitable persons by the trustees. The Board meets at least six times throughout each year to oversee the strategic management of the charity.

Organisational structure

The determination of the strategic direction for Cancer Support UK is the responsibility of the Board. The current trustees meet throughout the year to discuss the management of the charity.

The trustees delegate the day-to-day running of the charity to its Chief Executive Officer, Mark Guymmer, who took over from Gemma Holding in May 2022.

Induction and training of new trustees

The current trustees are familiar with the structure, strategy and practical operations of the charity.

Trustees take an active part in the oversight of Cancer Support UK's charitable programmes, participate in its annual planning and are kept up to date with a monthly programme, fundraising and administrative reports. All major strategic issues and decisions facing Cancer Support UK are addressed by the trustees and each of them are adequately trained and informed to carry out such duties.

All trustees have undertaken training in their fundraising and governance responsibilities.

REFERENCE AND ADMINISTRATIVE DETAILS

Registered Company number

05048319 (England and Wales)

Registered Charity number

1105703

Cancer Support UK (CSUK)

**Report of the Trustees
for the year ended 31 December 2022**

Registered office

Citibase Plc
Millbank Tower
21-24 Millbank
London
SW1P 4QP

Trustees

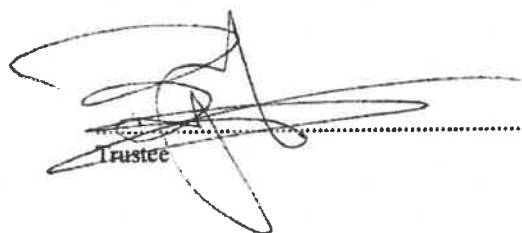
M R Doyle, Chair
Ms J E Dawson
Ms L M Delaney (appointed 4.2.2022)
Mr B Marcus (resigned 24.2.2022) (reappointed 1.08.2022)
Ms S E McDonald (resigned 14.3.2022)
Ms S Yaganti

Company Secretary

Independent Examiner

Grant Harrod Lerman Davis LLP
Chartered Accountants
1st Floor
Healthaid House
Marlborough Hill
Harrow
Middlesex
HA1 1UD

Report of the trustees, incorporating a strategic report, approved by order of the board of trustees, as the company directors, on13th Oct 23..... and signed on the board's behalf by:



Trustee

**Independent Examiner's Report to the Trustees of
Cancer Support UK (CSUK)**

Independent examiner's report to the trustees of Cancer Support UK (CSUK) ('the Company')

I report to the charity trustees on my examination of the accounts of the Company for the year ended 31 December 2022.

Responsibilities and basis of report

As the charity's trustees of the Company (and also its directors for the purposes of company law) you are responsible for the preparation of the accounts in accordance with the requirements of the Companies Act 2006 ('the 2006 Act').

Having satisfied myself that the accounts of the Company are not required to be audited under Part 16 of the 2006 Act and are eligible for independent examination, I report in respect of my examination of your charity's accounts as carried out under Section 145 of the Charities Act 2011 ('the 2011 Act'). In carrying out my examination I have followed the Directions given by the Charity Commission under Section 145(5) (b) of the 2011 Act.

Independent examiner's statement

Since your charity's gross income exceeded £250,000 your examiner must be a member of a listed body. I can confirm that I am qualified to undertake the examination because I am a member of the Association of Chartered Certified Accountants, which is one of the listed bodies.

I have completed my examination. I confirm that no matters have come to my attention in connection with the examination giving me cause to believe:

1. accounting records were not kept in respect of the Company as required by Section 386 of the 2006 Act; or
2. the accounts do not accord with those records; or
3. the accounts do not comply with the accounting requirements of Section 396 of the 2006 Act other than any requirement that the accounts give a true and fair view which is not a matter considered as part of an independent examination; or
4. the accounts have not been prepared in accordance with the methods and principles of the Statement of Recommended Practice for accounting and reporting by charities (applicable to charities preparing their accounts in accordance with the Financial Reporting Standard applicable in the UK and Republic of Ireland (FRS 102)).

I have no concerns and have come across no other matters in connection with the examination to which attention should be drawn in this report in order to enable a proper understanding of the accounts to be reached.



Jeremy Harrod FCCA

Grant Harrod Lerman Davis LLP
Chartered Accountants
1st Floor
Healthaid House
Marlborough Hill
Harrow
Middlesex
HA1 1UD

Date: 13/10/23

Cancer Support UK (CSUK)

**Statement of Financial Activities
for the year ended 31 December 2022**

	Notes	Unrestricted fund £	Restricted fund £	2022 Total funds £	2021 Total funds £
INCOME AND ENDOWMENTS FROM					
Donations and legacies	2	372,025	177,238	549,263	567,544
Investment income	3	<u>1,771</u>	<u>-</u>	<u>1,771</u>	<u>-</u>
Total		<u>373,796</u>	<u>177,238</u>	<u>551,034</u>	<u>567,544</u>
EXPENDITURE ON					
Raising funds	4	169,408	245	169,653	255,909
Charitable activities	5				
Charitable activities		467,189	103,319	570,508	543,745
Governance costs		<u>23,661</u>	<u>-</u>	<u>23,661</u>	<u>30,387</u>
Total		<u>660,258</u>	<u>103,564</u>	<u>763,822</u>	<u>830,041</u>
NET INCOME/(EXPENDITURE)		(286,462)	73,674	(212,788)	(262,497)
RECONCILIATION OF FUNDS					
Total funds brought forward		<u>362,666</u>	<u>31,979</u>	<u>394,645</u>	<u>657,142</u>
TOTAL FUNDS CARRIED FORWARD		<u>76,204</u>	<u>105,653</u>	<u>181,857</u>	<u>394,645</u>

The notes form part of these financial statements

Cancer Support UK (CSUK)

**Balance Sheet
31 December 2022**

	Notes	Unrestricted fund £	Restricted fund £	2022 Total funds £	2021 Total funds £
FIXED ASSETS					
Tangible assets	11	1,813	-	1,813	2,795
CURRENT ASSETS					
Debtors	12	30,247	-	30,247	138,567
Cash at bank		<u>91,569</u>	<u>105,653</u>	<u>197,222</u>	<u>342,345</u>
		121,816	105,653	227,469	480,912
CREDITORS					
Amounts falling due within one year	13	(47,425)	-	(47,425)	(89,062)
NET CURRENT ASSETS		<u>74,391</u>	<u>105,653</u>	<u>180,044</u>	<u>391,850</u>
TOTAL ASSETS LESS CURRENT LIABILITIES		<u>76,204</u>	<u>105,653</u>	<u>181,857</u>	<u>394,645</u>
NET ASSETS		<u>76,204</u>	<u>105,653</u>	<u>181,857</u>	<u>394,645</u>
FUNDS	14				
Unrestricted funds				76,204	362,666
Restricted funds				<u>105,653</u>	<u>31,979</u>
TOTAL FUNDS				<u>181,857</u>	<u>394,645</u>

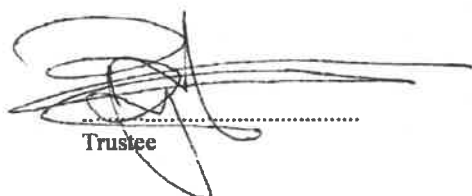
The charitable company is entitled to exemption from audit under Section 477 of the Companies Act 2006 for the year ended 31 December 2022.

The members have not required the company to obtain an audit of its financial statements for the year ended 31 December 2022 in accordance with Section 476 of the Companies Act 2006.

The trustees acknowledge their responsibilities for

- (a) ensuring that the charitable company keeps accounting records that comply with Sections 386 and 387 of the Companies Act 2006 and
- (b) preparing financial statements which give a true and fair view of the state of affairs of the charitable company as at the end of each financial year and of its surplus or deficit for each financial year in accordance with the requirements of Sections 394 and 395 and which otherwise comply with the requirements of the Companies Act 2006 relating to financial statements, so far as applicable to the charitable company.

The financial statements were approved by the Board of Trustees and authorised for issue on 13th Oct '23 and were signed on its behalf by:


Trustee

The notes form part of these financial statements

Cancer Support UK (CSUK)

**Cash Flow Statement
for the year ended 31 December 2022**

	Notes	2022 £	2021 £
Cash flows from operating activities			
Cash generated from operations	1	<u>(145,123)</u>	<u>(263,167)</u>
Net cash used in operating activities		<u>(145,123)</u>	<u>(263,167)</u>
Cash flows from investing activities			
Purchase of tangible fixed assets		<u>-</u>	<u>(1,142)</u>
Net cash provided by/(used in) investing activities		<u>-</u>	<u>(1,142)</u>
		<u>-</u>	<u>-</u>
Change in cash and cash equivalents in the reporting period		<u>(145,123)</u>	<u>(264,309)</u>
Cash and cash equivalents at the beginning of the reporting period		<u>342,345</u>	<u>606,654</u>
Cash and cash equivalents at the end of the reporting period		<u><u>197,222</u></u>	<u><u>342,345</u></u>

The notes form part of these financial statements

Cancer Support UK (CSUK)

**Notes to the Cash Flow Statement
for the year ended 31 December 2022**

1. RECONCILIATION OF NET EXPENDITURE TO NET CASH FLOW FROM OPERATING ACTIVITIES

	2022 £	2021 £
Net expenditure for the reporting period (as per the Statement of Financial Activities)	(212,788)	(262,497)
Adjustments for:		
Depreciation charges	982	831
Decrease/(increase) in debtors	108,320	(16,549)
(Decrease)/increase in creditors	<u>(41,637)</u>	<u>15,048</u>
Net cash used in operations	<u><u>(145,123)</u></u>	<u><u>(263,167)</u></u>

2. ANALYSIS OF CHANGES IN NET FUNDS

	At 1.1.22 £	Cash flow £	At 31.12.22 £
Net cash			
Cash at bank	<u>342,345</u>	<u>(145,123)</u>	<u>197,222</u>
	<u>342,345</u>	<u>(145,123)</u>	<u>197,222</u>
Total	<u><u>342,345</u></u>	<u><u>(145,123)</u></u>	<u><u>197,222</u></u>

The notes form part of these financial statements

Cancer Support UK (CSUK)
Notes to the Financial Statements
for the year ended 31 December 2022

1. ACCOUNTING POLICIES

Basis of preparing the financial statements

The financial statements of the charitable company, which is a public benefit entity under FRS 102, have been prepared in accordance with the Charities SORP (FRS 102) 'Accounting and Reporting by Charities: Statement of Recommended Practice applicable to charities preparing their accounts in accordance with the Financial Reporting Standard applicable in the UK and Republic of Ireland (FRS 102) (effective 1 January 2019)', Financial Reporting Standard 102 'The Financial Reporting Standard applicable in the UK and Republic of Ireland' and the Companies Act 2006. The financial statements have been prepared under the historical cost convention.

The financial statements are prepared in sterling, which is the functional currency of the charity. Monetary amounts in these financial statements are rounded to the nearest £.

The principal accounting policies adopted are set out below.

Going concern

The Trustees have considered the effect of the Covid-19 outbreak that has been spreading throughout the world since early 2020 on the charity. The pandemic has caused some disruption to the Charity's usual activities, in particular, Cancer Kit preparation and distribution was put on hold for a short time after the onset of the pandemic until it was established that it was "Covid-safe" to resume activity. Additionally, income from the collection of donated clothes decreased significantly due to government lockdowns and restrictions. However, outside of the short pause described above, the Cancer Kit and Cancer Coach services continued to run throughout the year and the charity was able to help even more people than in the previous financial year. In addition to this, the charity saw a considerable increase in income in the current year, due to the receipt of a large legacy. Based on the above considerations and financial projections prepared by the charity, the Trustees are confident that the charity has sufficient resources to continue in operation for the foreseeable future, thus the trustees continue to adopt the going concern basis of accounting in preparing the financial statements.

Income

Income is recognised when the charity is legally entitled to it after any performance conditions have been met, the amounts can be measured reliably, and it is probable that income will be received.

Cash donations are recognised on receipt. Other donations are recognised once the charity has been notified of the donation, unless performance conditions require deferral of the amount. Income tax recoverable in relation to donations received under Gift Aid or deeds of covenant is recognised at the time of the donation.

Legacies are recognised on receipt or otherwise if the charity has been notified of an impending distribution, the amount is known, and receipt is expected. If the amount is not known, the legacy is treated as a contingent asset.

Donated services and facilities are included at the value to the charity where this can be quantified. The value of services provided by volunteers has not been included in these financial statements.

Investment income, including bank interest, is included when receivable.

Income from clothes donated are recognised within the financial statements once the cash value of items is realised.

Resources expended

Expenditure is included in the Statement of Financial Activities on an accrual's basis, inclusive of any VAT which cannot be recovered. Expenditure is recognised once there is a legal constructive obligation to transfer economic benefit to a third party, it is probable that a transfer of economic benefits will be required in settlement and the amount of the obligation can be measured reliably. It is allocated between:

- expenditure incurred directly in the effort to raise voluntary contributions (cost of raising funds);
- expenditure incurred directly to the fulfilment of the charity's objectives (charitable activities).

Cancer Support UK (CSUK)

Notes to the Financial Statements - continued for the year ended 31 December 2022

1. ACCOUNTING POLICIES - continued

Resources expended

Where items of expenditure involve more than one cost category these costs have been apportioned on a reasonable basis as determined by the trustees. One particular area where the cost is material to the charity is in the production and distribution of the mail shots.

Furthermore the expenditure has been allocated on the basis of whether the educational content of the individual mail shot is significantly high enough so as to be material. When this holds true the remaining cost of the mail shot is allocated on a pro-rata basis comparing the educational content (costs in furtherance of the charity's objectives) to the fundraising content (costs of generating funds). The educational content is determined by the amount of text and space on each mail shot that is dedicated to material of an education nature.

Fundraising expenditure i.e. text that may induce a donation from the recipient, is allocated upon the basis of the volume of the text and space that is not related to text of an educational nature.

Support costs including other overheads which are not dealt with as part of the dual cost approach are allocated in the ratio of the total charitable expenditure to the total fundraising costs. A significant amount of the support costs are personnel costs which are initially allocated on the basis of the employee's function in the charity, with the residual administration costs being allocated in the ratio noted above.

Charitable funds

Unrestricted funds are available for use at the discretion of the trustees in furtherance of their charitable objectives.

Restricted funds are subject to specific conditions by donors as to how they may be used. The purposes and uses of the restricted funds are set out in the notes to the financial statements.

Tangible fixed assets

Depreciation is provided at the following annual rates in order to write off each asset over its estimated useful life.

Computer equipment - Straight line over 5 years

All tangible fixed assets costing more than £250 are capitalised at their cost to the charity.

The gain or loss arising on the disposal of an asset is determined as the difference between the sale proceeds and the carrying value of the asset, and is recognised in net income/(expenditure) for the year.

Taxation

The charity is exempt from corporation tax on its charitable activities.

Fund accounting

Unrestricted funds can be used in accordance with the charitable objectives at the discretion of the trustees.

Restricted funds can only be used for particular restricted purposes within the objects of the charity. Restrictions arise when specified by the donor or when funds are raised for particular restricted purposes.

Further explanation of the nature and purpose of each fund is included in the notes to the financial statements.

Critical accounting estimates and judgements

In the application of the charity's accounting policies, the Trustees are required to make judgements, estimates and assumptions about the carrying amount of assets and liabilities that are not readily apparent from other sources. The trustees are required to make estimates in respect of legacy income. The basis of recognition is provided within the income accounting policy above (see policy 1.4).

Employee Benefits

The cost of any unused holiday entitlement is recognised in the period in which the employee's services are received.

Cancer Support UK (CSUK)

Notes to the Financial Statements - continued for the year ended 31 December 2022

1. ACCOUNTING POLICIES - continued

Critical accounting estimates and judgements

Termination benefits are recognised immediately as an expense when the charity is demonstrably committed to terminate the employment of an employee or to provide termination benefits.

Cash and cash equivalents

Cash and cash equivalents include cash in hand and deposits held at call with banks. Bank overdrafts are shown within borrowings in current liabilities.

Financial instruments

The charity has elected to apply the provisions of Section 11 'Basic Financial Instruments' and Section 12 'Other Financial Instruments Issues' of FRS 102 to all of its financial instruments.

The charity only has financial assets and financial liabilities of a kind that qualify as basic financial instruments. Basic financial instruments are initially recognised at transaction value and subsequently measured at their settlement value.

2. DONATIONS AND LEGACIES

	2022	2021
	£	£
Donation and gifts	336,522	363,584
Gift aid	28,042	35,953
Legacies	142,629	104,040
Income from clothes donated	<u>42,070</u>	<u>63,967</u>
	<u>549,263</u>	<u>567,544</u>

3. INVESTMENT INCOME

	2022	2021
	£	£
Interest income	<u>1,771</u>	<u>-</u>

4. RAISING FUNDS

Raising donations and legacies

	2022	2021
	£	£
Staff costs	62,016	37,093
Other fundraising costs	107,637	217,207
Support costs	<u>-</u>	<u>1,609</u>
	<u>169,653</u>	<u>255,909</u>

Cancer Support UK (CSUK)

**Notes to the Financial Statements - continued
for the year ended 31 December 2022**

5. CHARITABLE ACTIVITIES COSTS

	Direct Costs £	Support costs (see note 6) £	Totals £
Charitable activities	440,979	129,529	570,508
Governance costs	-	<u>23,661</u>	<u>23,661</u>
	<u>440,979</u>	<u>153,190</u>	<u>594,169</u>

6. SUPPORT COSTS

	Management £	Finance £	Other £	Totals £
Charitable activities	3,672	650	125,207	129,529
Governance costs	<u>23,661</u>	-	-	<u>23,661</u>
	<u>27,333</u>	<u>650</u>	<u>125,207</u>	<u>153,190</u>

7. NET INCOME/(EXPENDITURE)

Net income/(expenditure) is stated after charging/(crediting):

	2022 £	2021 £
Depreciation - owned assets	<u>982</u>	<u>831</u>

8. TRUSTEES' REMUNERATION AND BENEFITS

There were no trustees' remuneration or other benefits for the year ended 31 December 2022 nor for the year ended 31 December 2021.

Trustees' expenses

There were no trustees' expenses paid for the year ended 31 December 2022 nor for the year ended 31 December 2021.

9. STAFF COSTS

	2022 £	2021 £
Wages and salaries	<u>331,116</u>	<u>308,529</u>
	<u>331,116</u>	<u>308,529</u>

The average monthly number of employees during the year was as follows:

<u>2022</u>	<u>2021</u>
-------------	-------------

The number of employees whose employee benefits (excluding employer pension costs) exceeded £60,000 was:

	2022	2021
£60,001 - £70,000	<u>1</u>	<u>-</u>

Cancer Support UK (CSUK)

**Notes to the Financial Statements - continued
for the year ended 31 December 2022**

10. COMPARATIVES FOR THE STATEMENT OF FINANCIAL ACTIVITIES

	Unrestricted fund £	Restricted fund £	Total funds £
INCOME AND ENDOWMENTS FROM			
Donations and legacies	<u>412,100</u>	<u>155,444</u>	<u>567,544</u>
 EXPENDITURE ON			
Raising funds	255,909	-	255,909
Charitable activities			
Charitable activities	387,649	156,096	543,745
Governance costs	<u>30,387</u>	<u>-</u>	<u>30,387</u>
Total	<u>673,945</u>	<u>156,096</u>	<u>830,041</u>
 NET INCOME/(EXPENDITURE)	 (261,845)	 (652)	 (262,497)
 RECONCILIATION OF FUNDS			
Total funds brought forward	<u>624,511</u>	<u>32,631</u>	<u>657,142</u>
 TOTAL FUNDS CARRIED FORWARD	 <u><u>362,666</u></u>	 <u><u>31,979</u></u>	 <u><u>394,645</u></u>

11. TANGIBLE FIXED ASSETS

	Computer equipment £
COST	
At 1 January 2022 and 31 December 2022	<u>5,057</u>
 DEPRECIATION	
At 1 January 2022	2,262
Charge for year	<u>982</u>
 At 31 December 2022	<u>3,244</u>
 NET BOOK VALUE	
At 31 December 2022	<u><u>1,813</u></u>
 At 31 December 2021	<u><u>2,795</u></u>

Cancer Support UK (CSUK)

**Notes to the Financial Statements - continued
for the year ended 31 December 2022**

12. DEBTORS: AMOUNTS FALLING DUE WITHIN ONE YEAR

	2022	2021
	£	£
Trade debtors	12,865	38,007
Other debtors	9,304	26,338
Prepayments and accrued income	<u>8,078</u>	<u>74,222</u>
	<u>30,247</u>	<u>138,567</u>

13. CREDITORS: AMOUNTS FALLING DUE WITHIN ONE YEAR

	2022	2021
	£	£
Trade creditors	18,572	61,582
Social security and other taxes	8,003	8,246
Other creditors	1,028	2,465
Accruals and deferred income	<u>19,822</u>	<u>16,769</u>
	<u>47,425</u>	<u>89,062</u>

14. MOVEMENT IN FUNDS

	At 1.1.22 £	Net movement in funds £	At 31.12.22 £
Unrestricted funds			
General fund	362,666	(286,462)	76,204
Restricted funds			
Restricted fund	31,979	73,674	105,653
	<u>394,645</u>	<u>(212,788)</u>	<u>181,857</u>

Net movement in funds, included in the above are as follows:

	Incoming resources £	Resources expended £	Movement in funds £
Unrestricted funds			
General fund	373,796	(660,258)	(286,462)
Restricted funds			
Restricted fund	177,238	(103,564)	73,674
	<u>551,034</u>	<u>(763,822)</u>	<u>(212,788)</u>

Cancer Support UK (CSUK)

**Notes to the Financial Statements - continued
for the year ended 31 December 2022**

14. MOVEMENT IN FUNDS - continued

Comparatives for movement in funds

	At 1.1.21 £	Net movement in funds £	At 31.12.21 £
Unrestricted funds			
General fund	624,511	(261,845)	362,666
Restricted funds			
Restricted fund	32,631	(652)	31,979
	<hr/>	<hr/>	<hr/>
TOTAL FUNDS	<u>657,142</u>	<u>(262,497)</u>	<u>394,645</u>

Comparative net movement in funds, included in the above are as follows:

	Incoming resources £	Resources expended £	Movement in funds £
Unrestricted funds			
General fund	412,100	(673,945)	(261,845)
Restricted funds			
Restricted fund	155,444	(156,096)	(652)
	<hr/>	<hr/>	<hr/>
TOTAL FUNDS	<u>567,544</u>	<u>(830,041)</u>	<u>(262,497)</u>

A current year 12 months and prior year 12 months combined position is as follows:

	At 1.1.21 £	Net movement in funds £	At 31.12.22 £
Unrestricted funds			
General fund	624,511	(548,307)	76,204
Restricted funds			
Restricted fund	32,631	73,022	105,653
	<hr/>	<hr/>	<hr/>
TOTAL FUNDS	<u>657,142</u>	<u>(475,285)</u>	<u>181,857</u>

Cancer Support UK (CSUK)

**Notes to the Financial Statements - continued
for the year ended 31 December 2022**

14. MOVEMENT IN FUNDS - continued

A current year 12 months and prior year 12 months combined net movement in funds, included in the above are as follows:

	Incoming resources £	Resources expended £	Movement in funds £
Unrestricted funds			
General fund	785,896	(1,334,203)	(548,307)
Restricted funds			
Restricted fund	332,682	(259,660)	73,022
	<hr/>	<hr/>	<hr/>
TOTAL FUNDS	<u>1,118,578</u>	<u>(1,593,863)</u>	<u>(475,285)</u>

15. RELATED PARTY DISCLOSURES

There were no related party transactions for the year ended 31 December 2022.